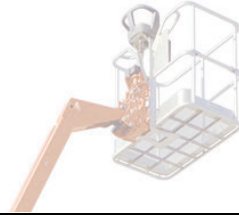




**ECO RENTALS**

Free Delivery - Brand New Equipment

## TOWABLE BOOM LIFT T-500 TECHNICAL SPECIFICATIONS



PERFORMANCE SPECIFICATIONS	Imperial	Metric
Platform Height - Elevated	50 ft 9.5 in.	15.3 m
Working Outreach	31 ft 6 in.	9.6 m.
Centerline to Platform Edge	29 ft 6 in.	9.0 m.
From Outrigger Pad Edge	23 ft 6 in.	7.14 m.
Up and Over Height	18 ft	5.49 m.
Swing	410 Degrees Non-Continuous	
Platform Capacity	500 lb.	227 kg.
Platform Capacity w/Rotator	440 lb.	200 kg.
Material Hook Capacity	500 lb.	227 kg.
JIB Length	4 ft.	1.22 m.
Weight	4,800 lb.	2,177 kg.
Leveling Capability	11 Degrees	
Towing Speed Rating	64 mph	105 kmph
Tongue Weight	350 lb.	159 kg.

### POWER SOURCE

DC Power	24V DC
Batteries	4 x 6V220 amp-hr
Gasoline Engine (Optional)	Honda GX 270-9 hp.

### TIRES

Size and Type	225/75 R15 Pneumatic
---------------	----------------------



[www.ecorentalsllc.com](http://www.ecorentalsllc.com)  
786-641-7005

[info@ecorentalsllc.com](mailto:info@ecorentalsllc.com)  
786-641-3900

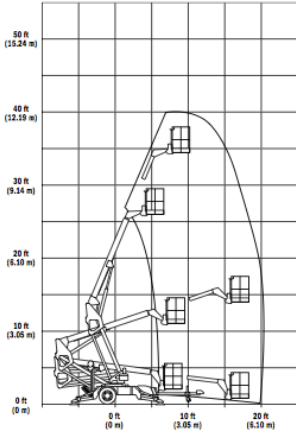
TOWABLE BOOM LIFT T-500



**ECO RENTALS**

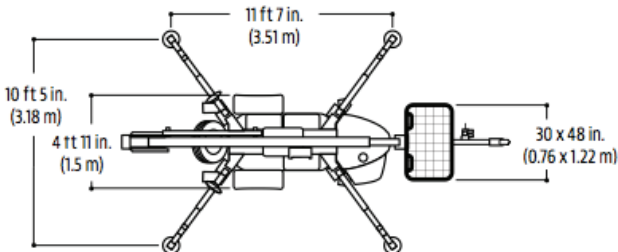
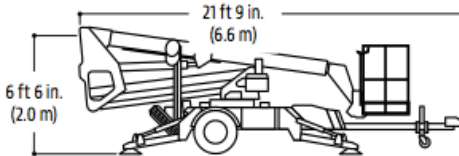
Free Delivery - Brand New Equipment

## TOWABLE BOOM LIFT T-500 TECHNICAL SPECIFICATIONS



### STANDARD FEATURES

Telescopic Upper Boom
Platform, Side Entry: 30 x 48 in. 0.76 x 1.22 m.
Proportional Controls
110V-AC Receptacle in the Platform
Auto-Leveling Hydraulic Outriggers
Motion Alarm
Tilt Alarm/Indicator Light
Hourmeter
Four V220 Amp-Hour Batteries
Battery Condition Indicator
Parking Brake
2 in. Hitch with Adjustable Height Cooler
Standard Air and Water Lines to Platform



www.ecorentalsllc.com  
786-641-7005

info@ecorentalsllc.com  
786-641-3900